





Fig. 1- 3. Fotografie della pietra ricevute dal prof. Themelis grazie all'Ephoria di Messene.

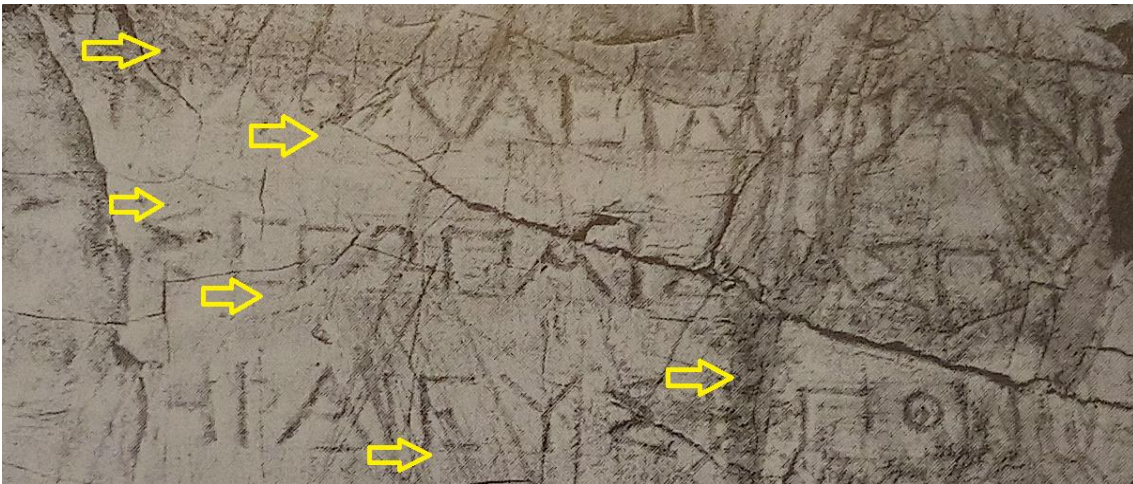


Fig. 4. Linee guida.

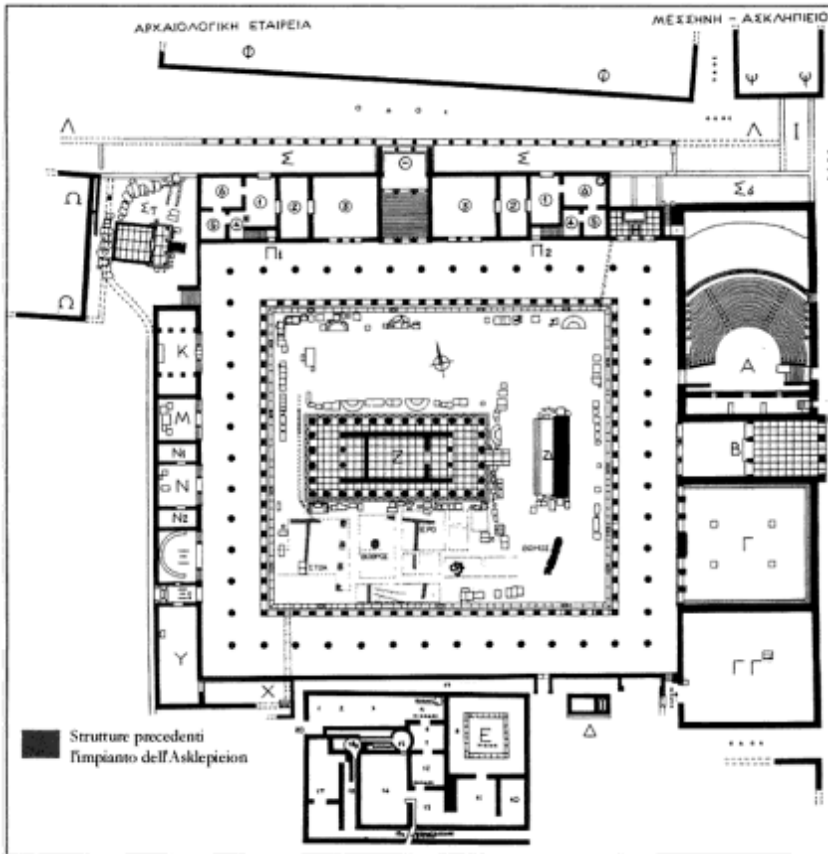


Fig. 5. Pianta del santuario di Messene. Themelis 2010, p. 8.

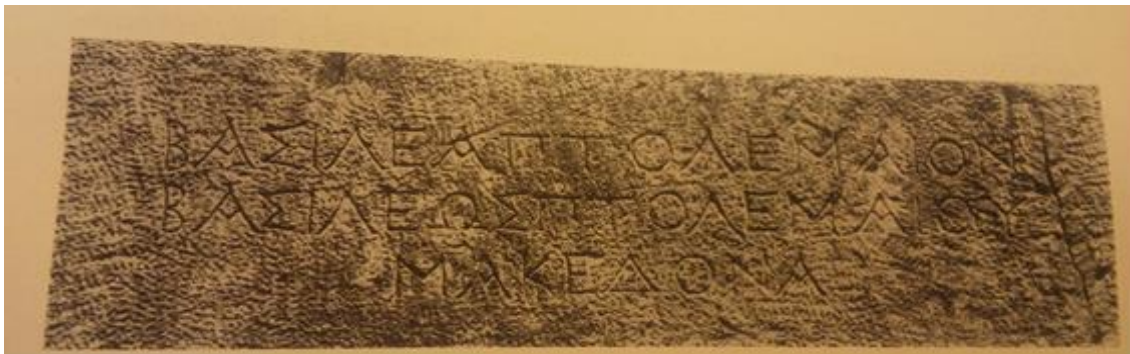


Fig. 6. Thermos, Dedicazione degli Etoli a Tolomeo III Evergete, 240-221 a.C.



Fig. 7. Themelis 2011 p. 146 (II/I a.C.)<sup>1</sup>.

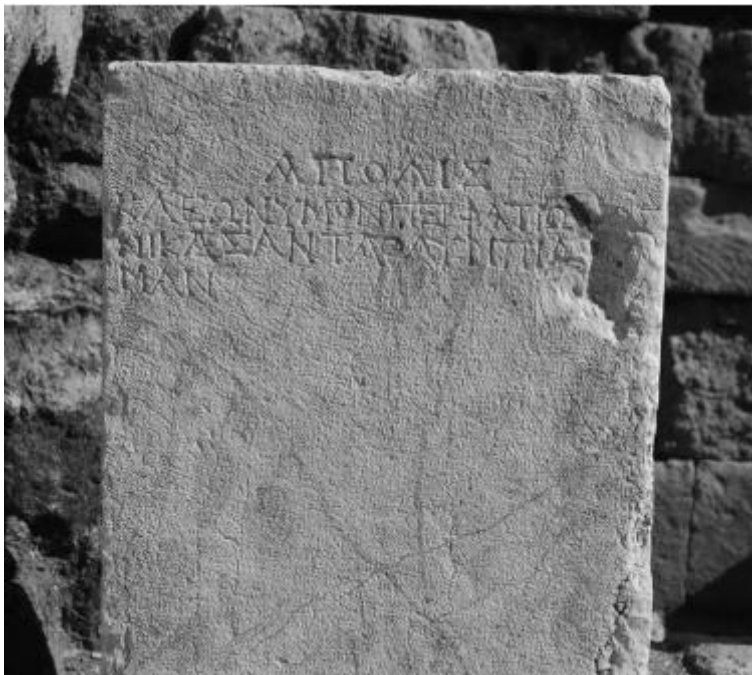


Fig. 8. Themelis 2011, p. 146 (II a.C.)<sup>2</sup>.

<sup>1</sup> [Χίο]νιν Χιόνιος | [ἀ π]όλις ἀνέθηκε |[νι]κάσαντα παῖδας | [πτυγ]μὰν Πύθια, Βασίλεια

<sup>2</sup> Ἄ πόλις | Κλεώνυμον Περφρατίω[ν]ος | νικάσαντα Ὀλύμπια νικάσαντα Ὀλύμπια [πτυγ]-| μὰν vacat



Fig. 9. Themelis 2011, p. 147 (II a.C)<sup>3</sup>.

---

<sup>3</sup> Πολυκλῆ Λυσάνδρου νικάσαντα Πολυκλῆ Λυσάνδρου νικάσαντα [- - - - -] [- - - - -] Ἰολύμπια, Λύκαια  
ὁ δᾶμος ἀνέθ [ηκεν]